



THE OHIO STATE UNIVERSITY

Trauma-informed Caregiving in Child Welfare

Bridget Freisthler, OSU College of Social Work

Elinam Dellor, OSU College of Social Work

Julie Cooper, Trauma Free World

Our Roadmap

1

- Ohio START: Focus on Trauma

2

- Trauma exposure among Ohio START families

3

- Back2Back: Intro to Trauma Competent Care

WHY Ohio START?

- Parental drug use responsible for ½ of children taken into custody (PCSAO, 2015) ¹
- 28% increase in children in custody ²
- Adapted from National START model
 - Sobriety Treatment and Recovery Teams
 - vs.
 - Sobriety Treatment and Reducing Trauma

Key Components of Ohio START

- Family-centered approach
- Early family identification, engagement and intervention
- Expedited access to SUD treatment with frequent, intense and coordinated service delivery
- A specialized caseworker and family peer mentor dyads
- Capped caseloads for START teams

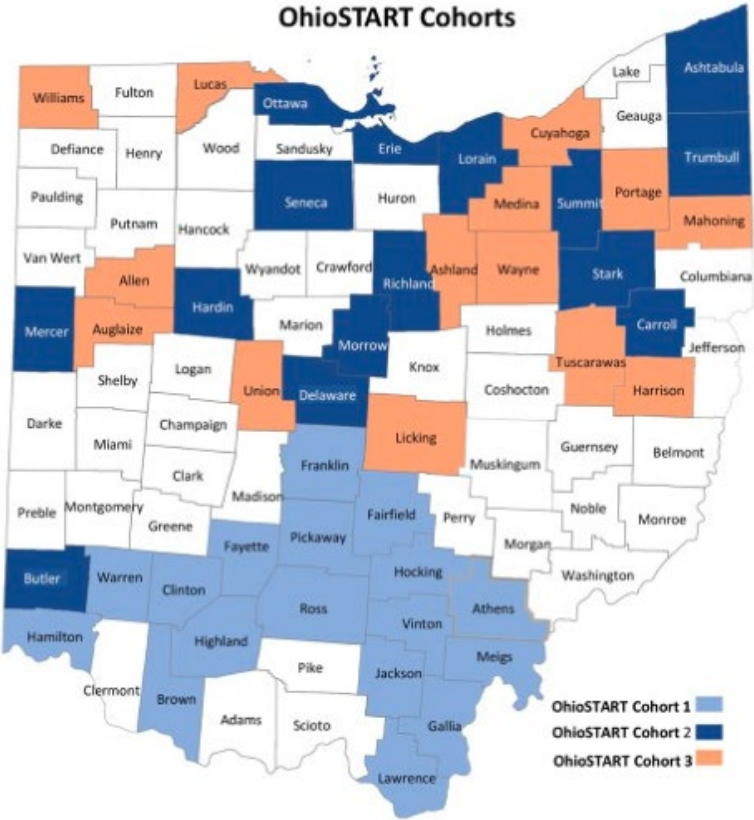
Key Components of Ohio START

- Assessments for all parents, addressing substance use and trauma
- Assessments for all children addressing trauma
- Parenting supports (e.g. basic needs, transportation and childcare)
- Ongoing evaluation to improve fidelity and family-centered outcomes.

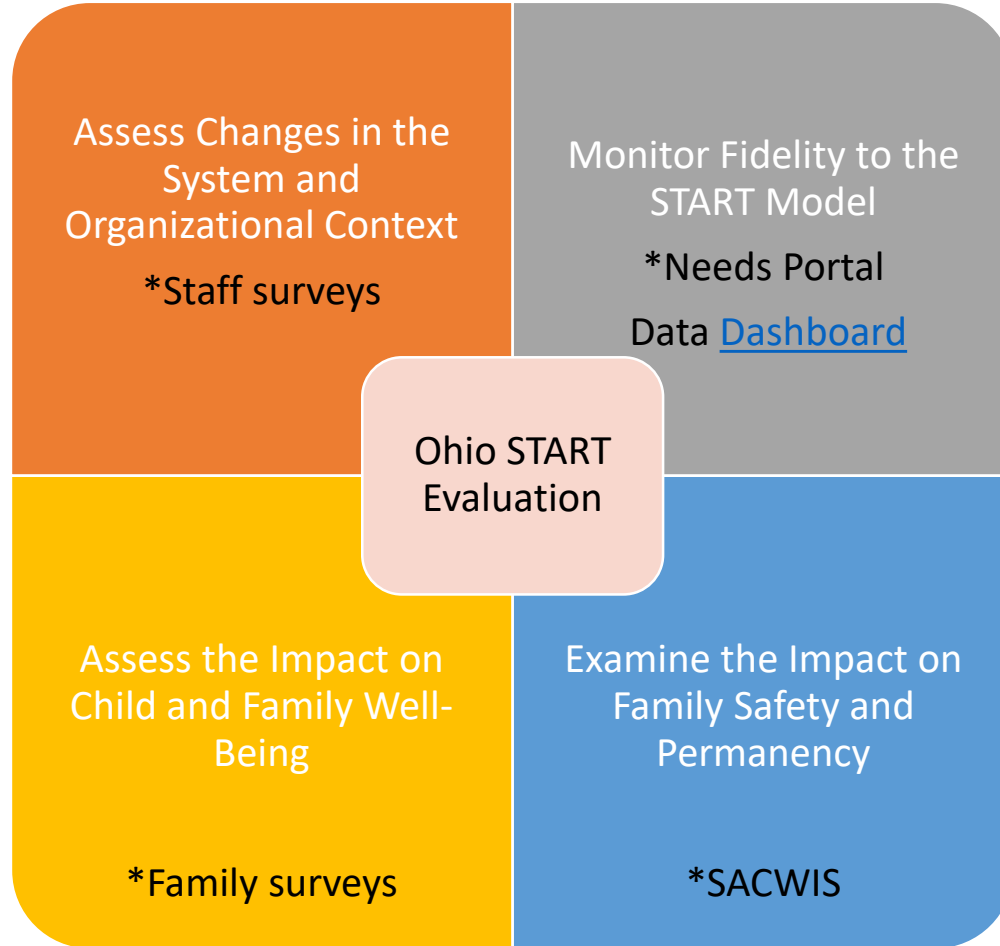
COLLABORATIVE EFFORT

- Public Children Services Association of Ohio
- Office of Ohio Governor Mike DeWine
- Ohio Department of Job and Family Services
- Ohio Department of Mental Health and Addiction Services
- Ohio Attorney General's Office
- United Healthcare Community Plan of Ohio
- The HealthPath Foundation of Ohio

COHORT SELECTION AND IMPLEMENTATION

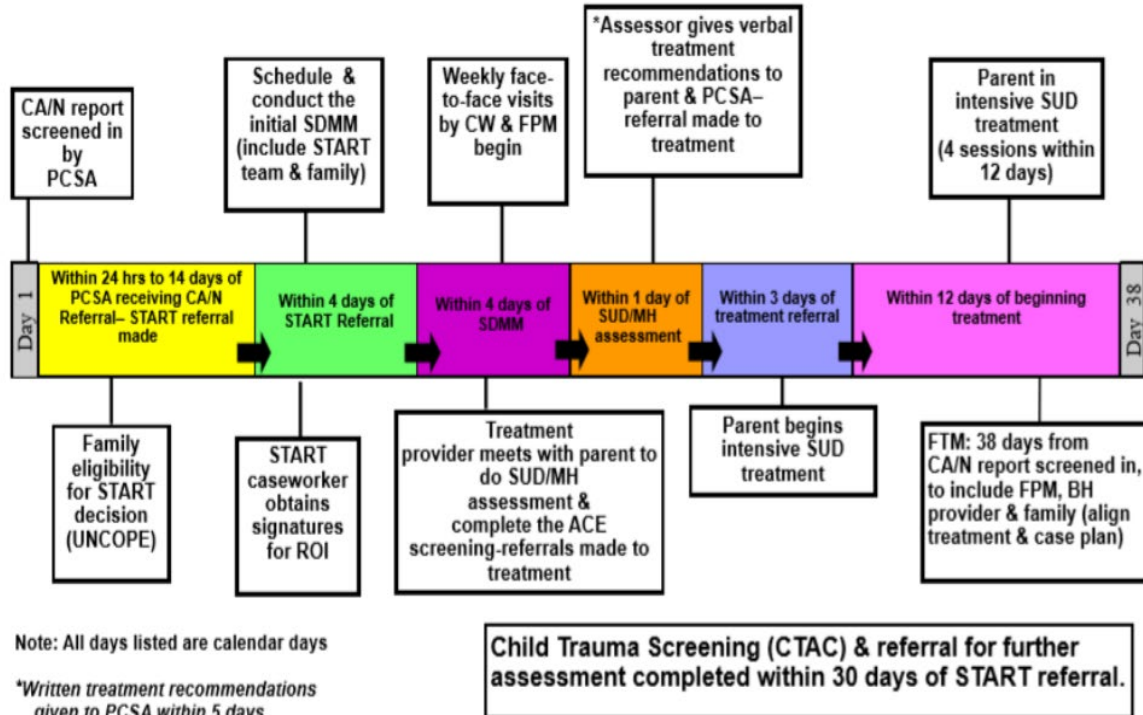


ONGOING EVALUATION ACTIVITIES



Ohio START Timeline

Initiation of a START Case– 38 Days



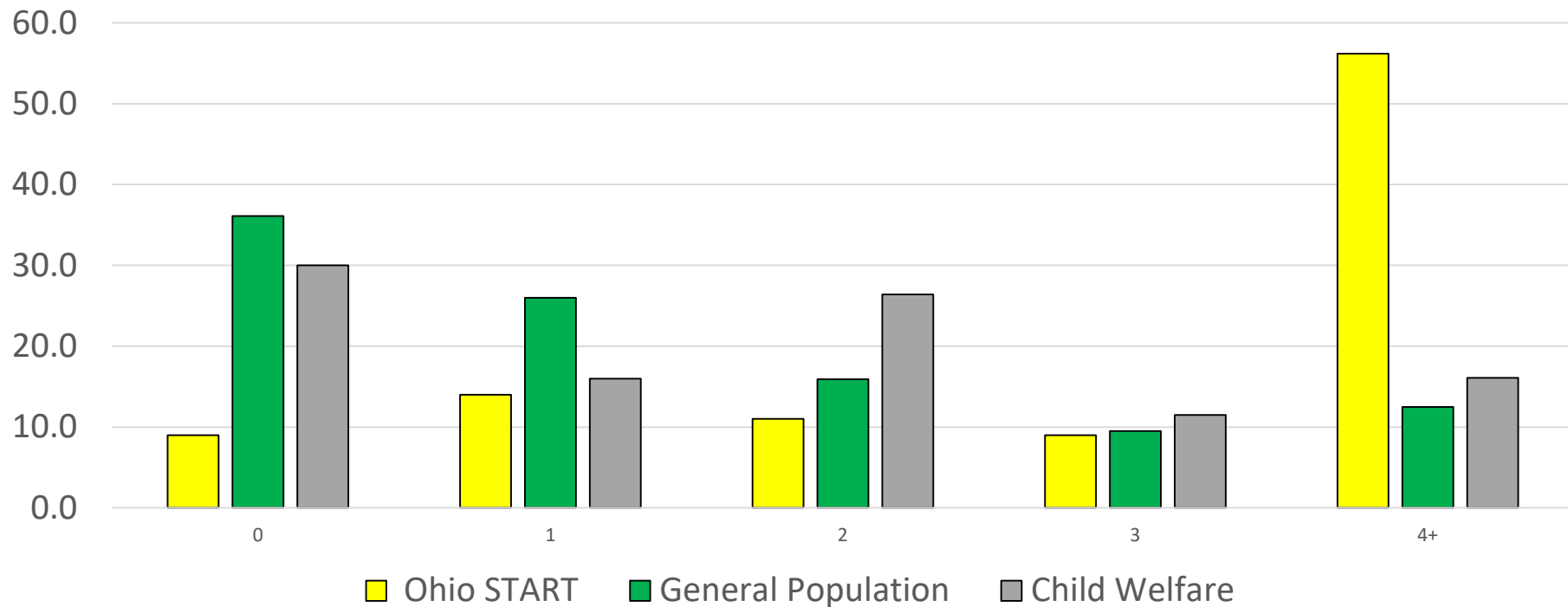


2

- Trauma exposure among Ohio START families

Parents (N=389)		
	Number	% or Mean
Gender		
Female	296	76.0
Male	93	24.0
Age (18-53)	--	30.3
Race		
Caucasian / White	363	93.0
Black / African American	10	3.0
All others	16	4.1
Mean UNCOPE Scores (0-6)	--	4.7

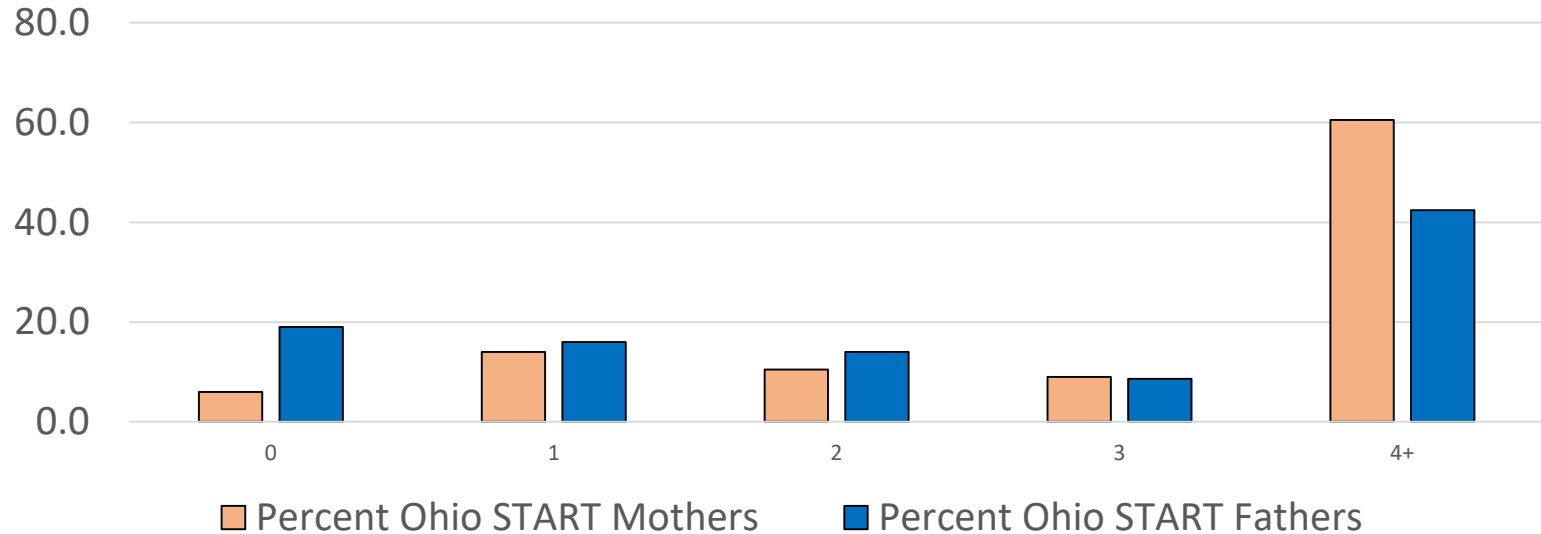
Distribution of ACE scores among Ohio START Parents (Mean Score: 4.2)



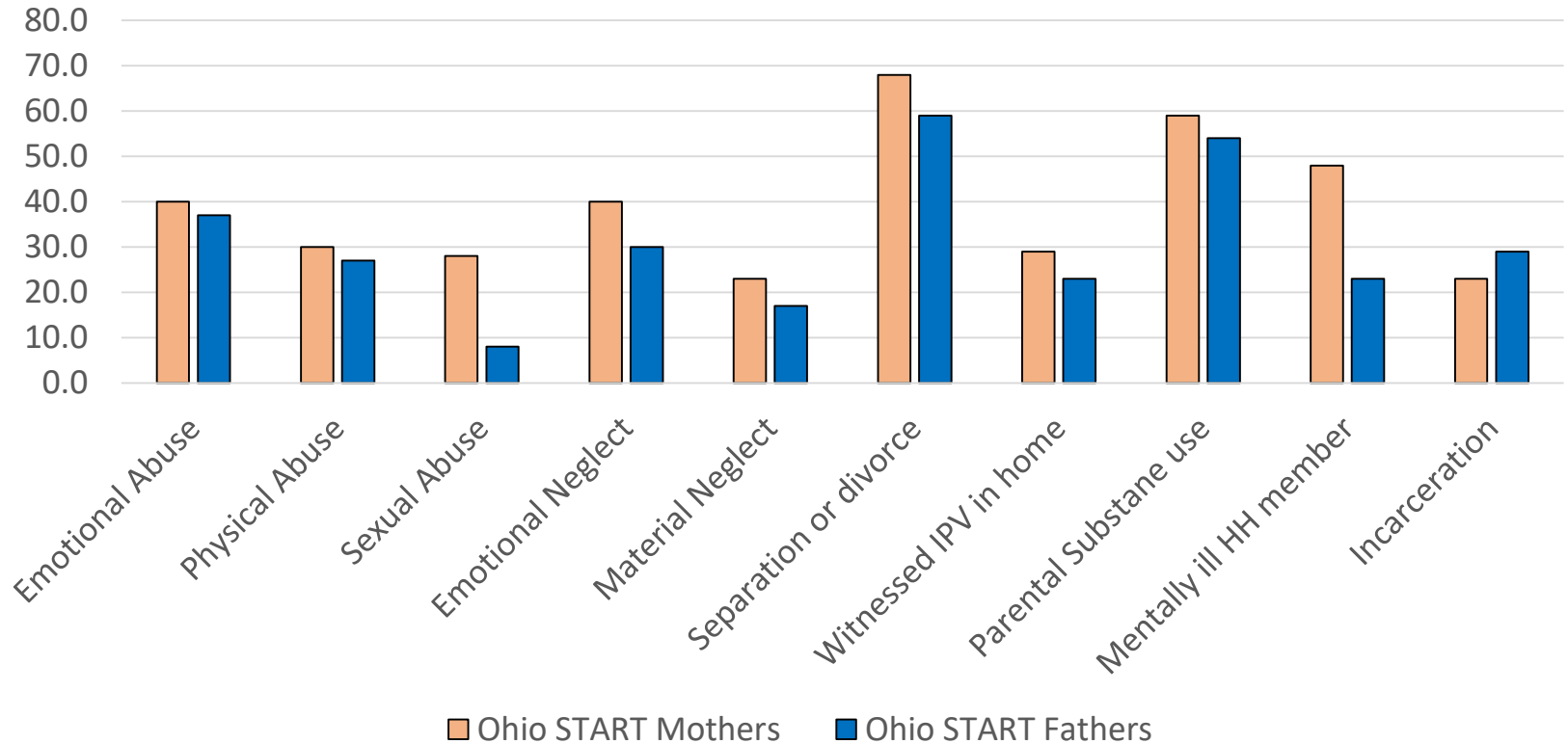
Distribution of ACE scores among Ohio START Parents

Mothers: 4.5

Fathers: 3.1

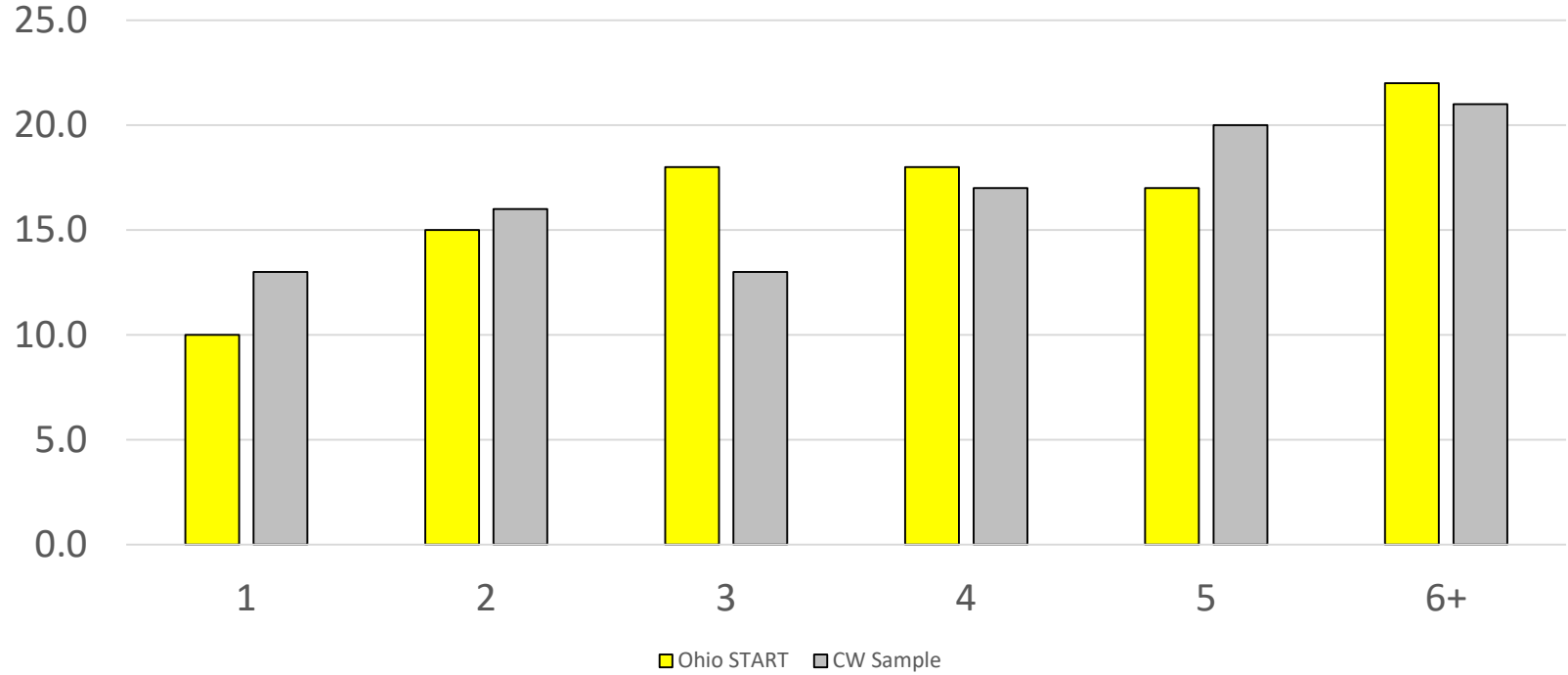


ACEs by Type: Ohio START Parents



Children 0-5 (N=387)		
	Number	% or Mean
Gender		
Female	201	52.0
Male	186	48.0
Age	--	1.7
Race		
Caucasian / White	329	85.0
Black / African American	26	7.0
Multiracial	9	2.3
All others	25	6.5

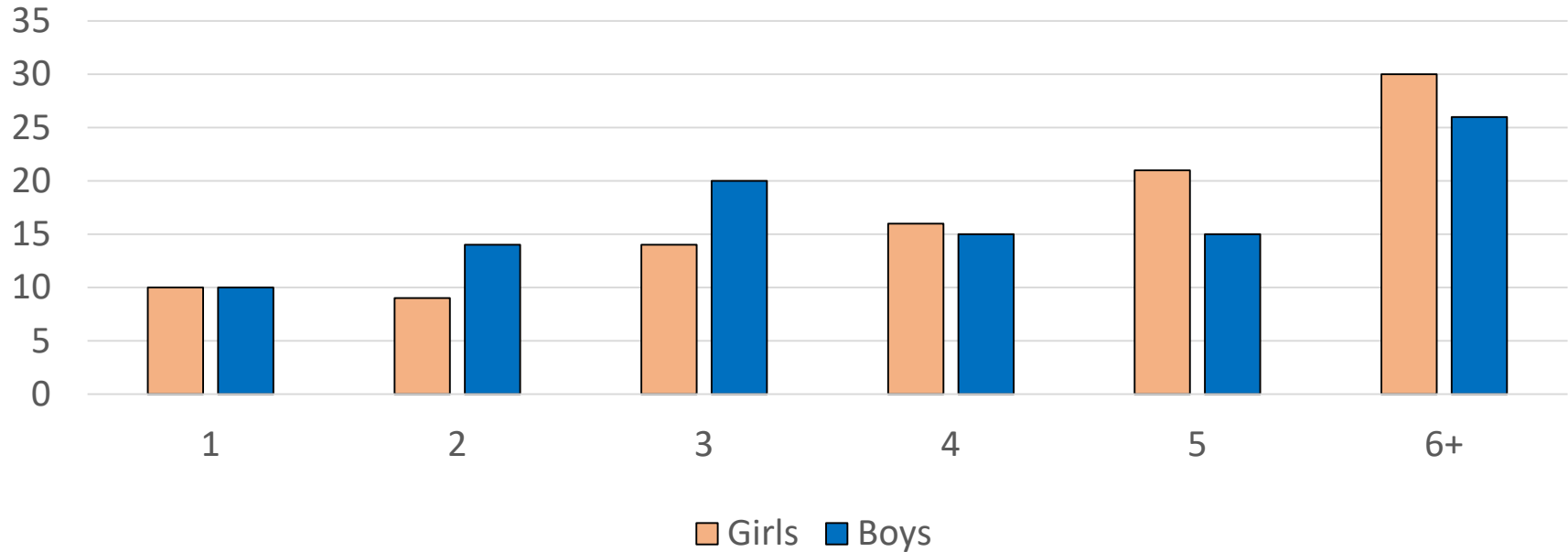
Distribution of CTAC scores Children 0-5 (Mean score: 4.15)



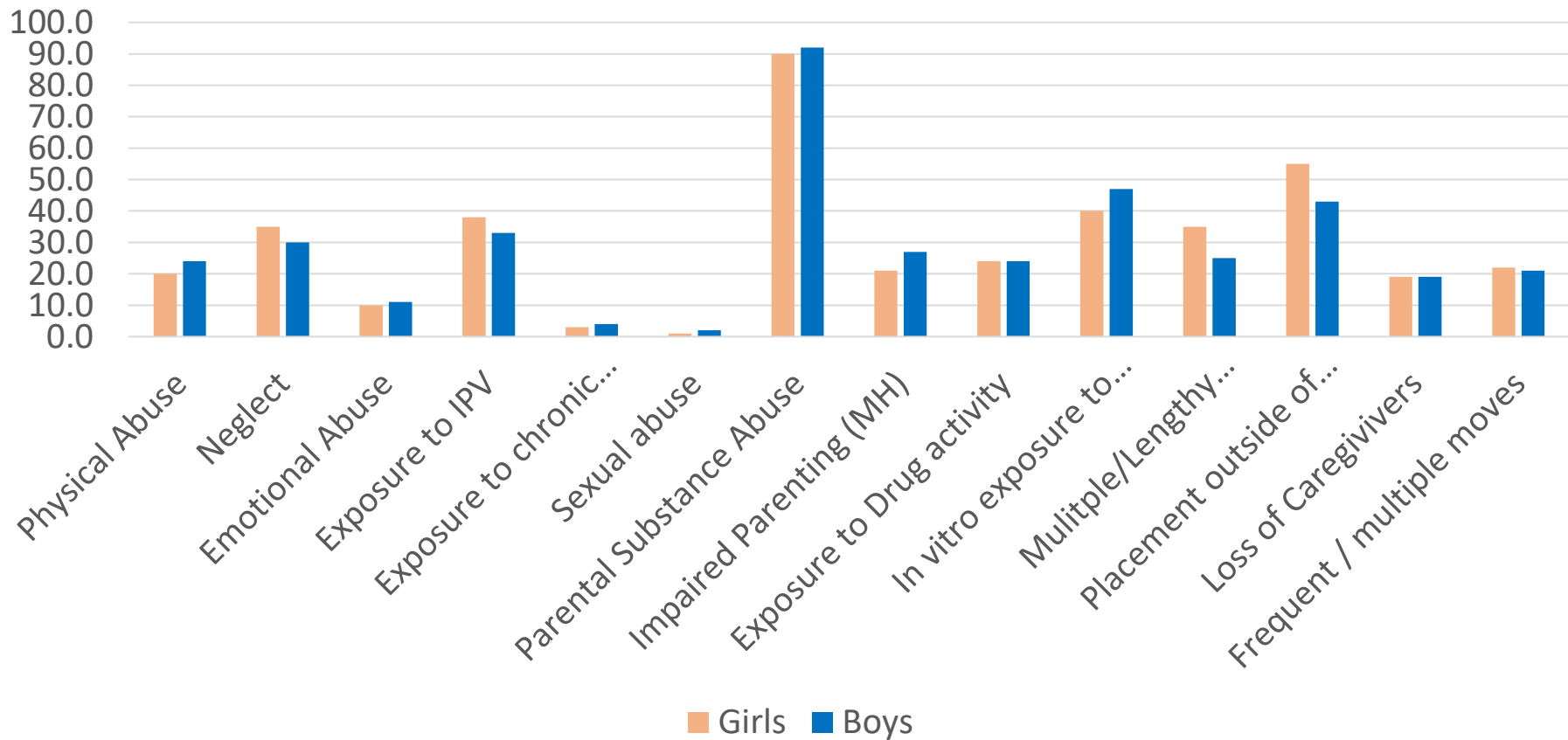
Distribution of CTAC scores: Children 0-5

Girls: 4.13

Boys: 4.17

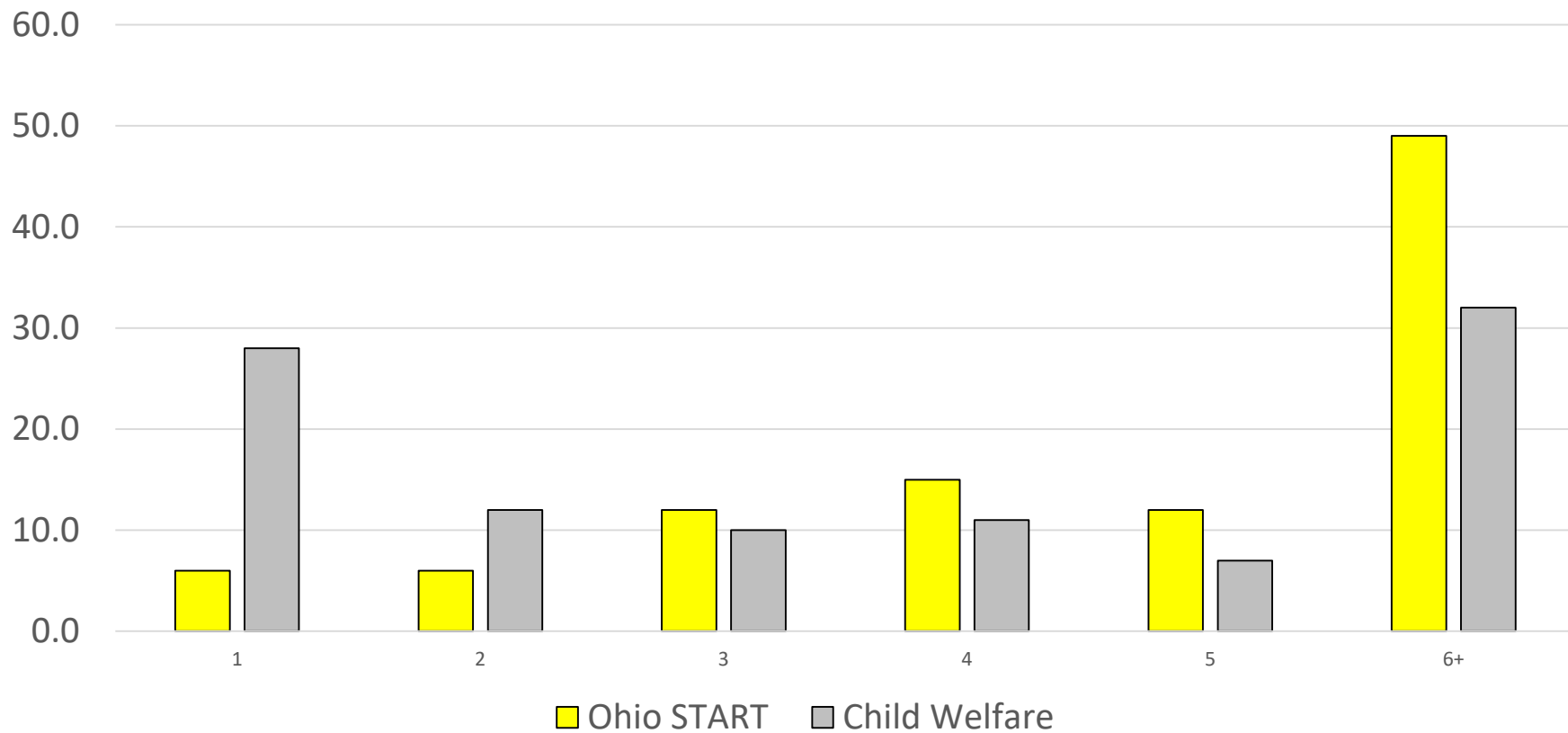


CTACs by Type: Children 0-5

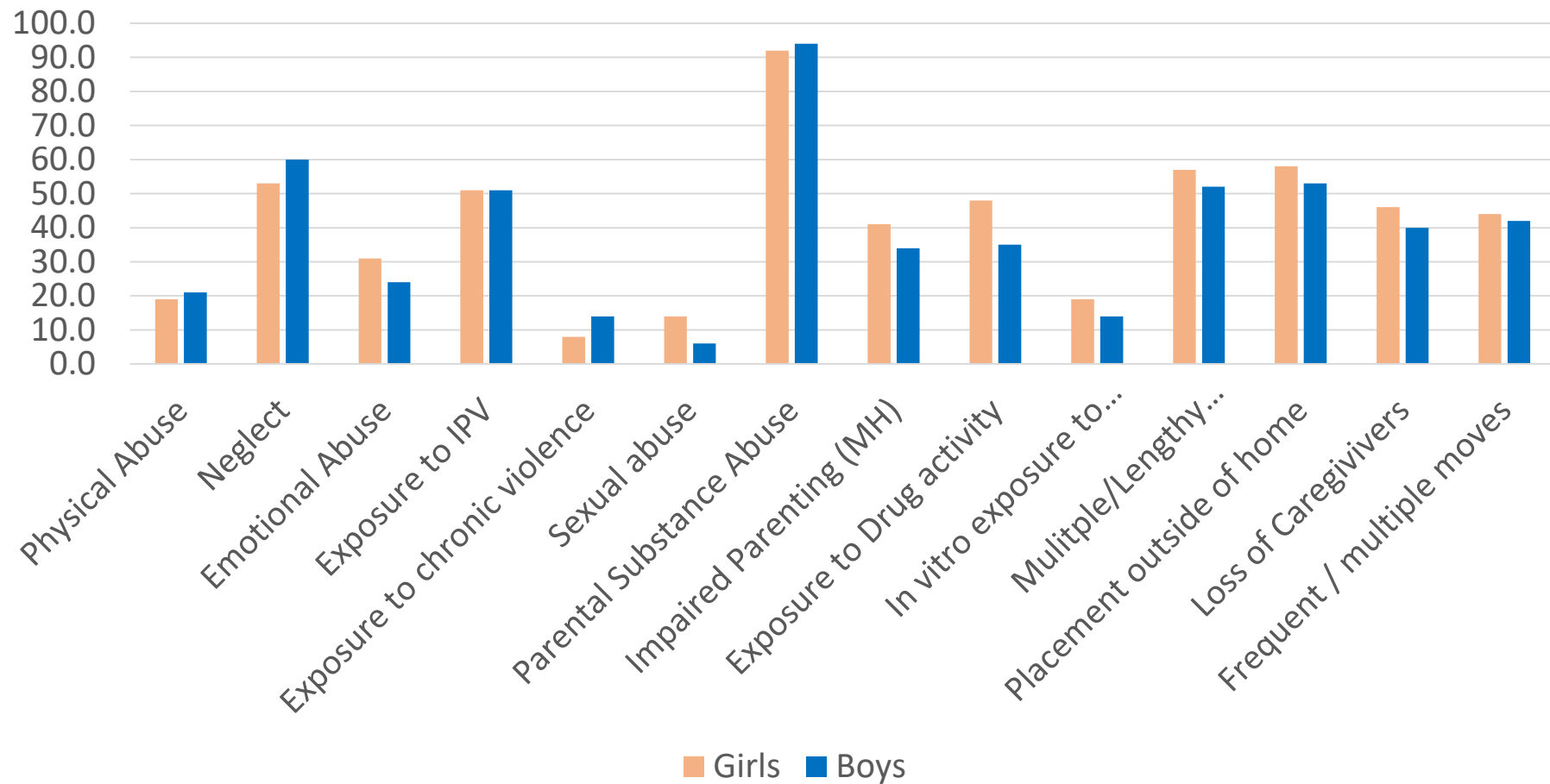


Children 6-18 (N=249)		
	Number	% or Average
Gender		
Female	119.0	48.0
Male	130.0	52.0
Age	--	10.1
Race		
Caucasian / White	196.0	79.0
Black / African American	23.0	9.2
Multiracial	7.0	2.8
Not reported	15.0	6.0

Distribution of CTAC Scores: Children 6-18 (Mean Score=5.6)



CTACs by Type: Children 6-18



Discussion

- Program implications
- Health and well-being
- Parenting implications

3

- Back2Back: Intro to Trauma Competent Care



Trauma Competent Care

The 7 Essential Skills

Developed in coordination with the National Child Traumatic Stress Network's Essential Skills of trauma-informed care.

1. Understand the Impact Trauma

2. Increase Felt Safety

3. Reduce Overwhelming Emotions

4. Modify Overwhelming Behaviors

5. Support Relationships

6. Develop the Child's Life Story

7. Self Care

Focus on Holistic Care



Goals of Trauma Competent Care for Children



SAFETY



PERMANENCY



WELL-BEING

Goals for Trauma-Informed Caregivers



UNDERSTAND



RECOGNIZE

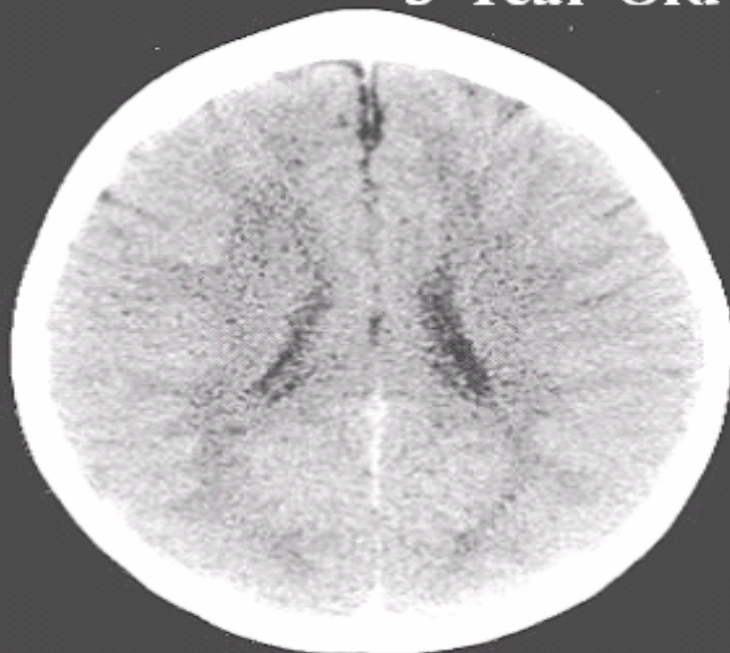


RESPOND

A discussion - What do you need to know about these, and how are they different?

- Stress
- Trauma
- Risk Factors

3-Year-Old Children



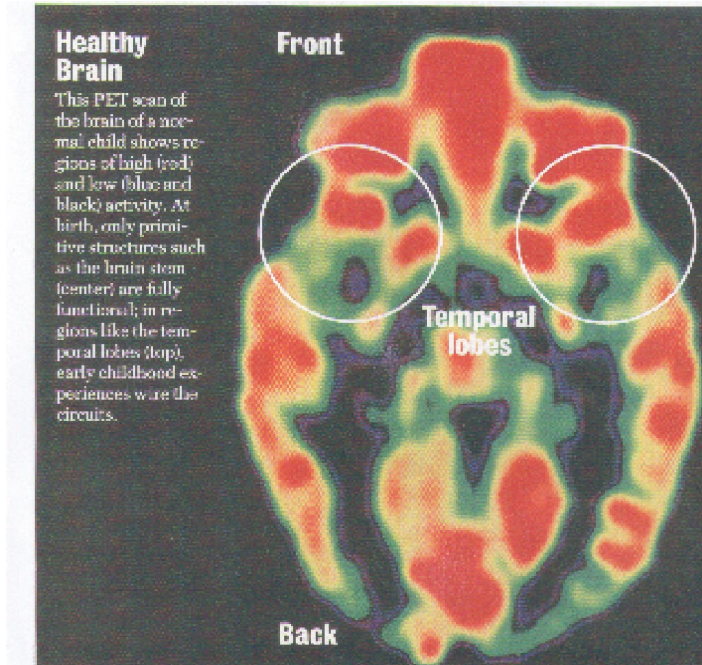
Normal



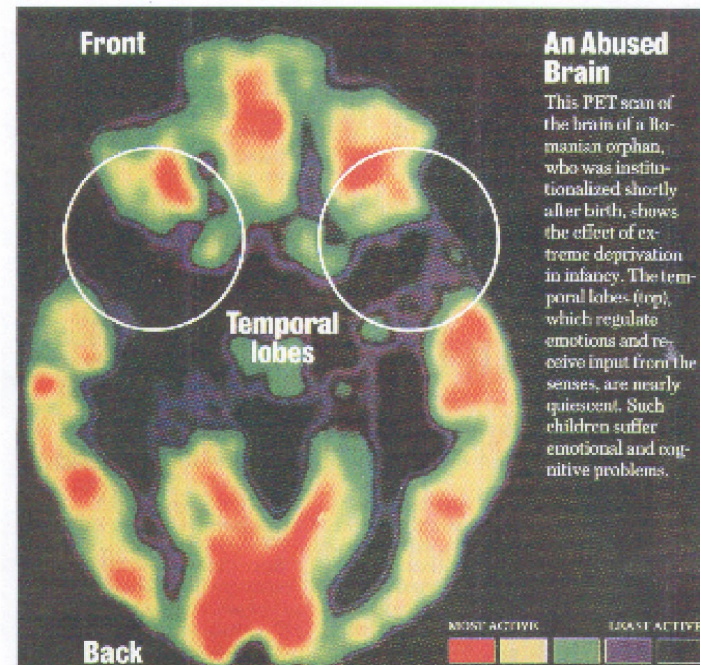
Extreme Neglect

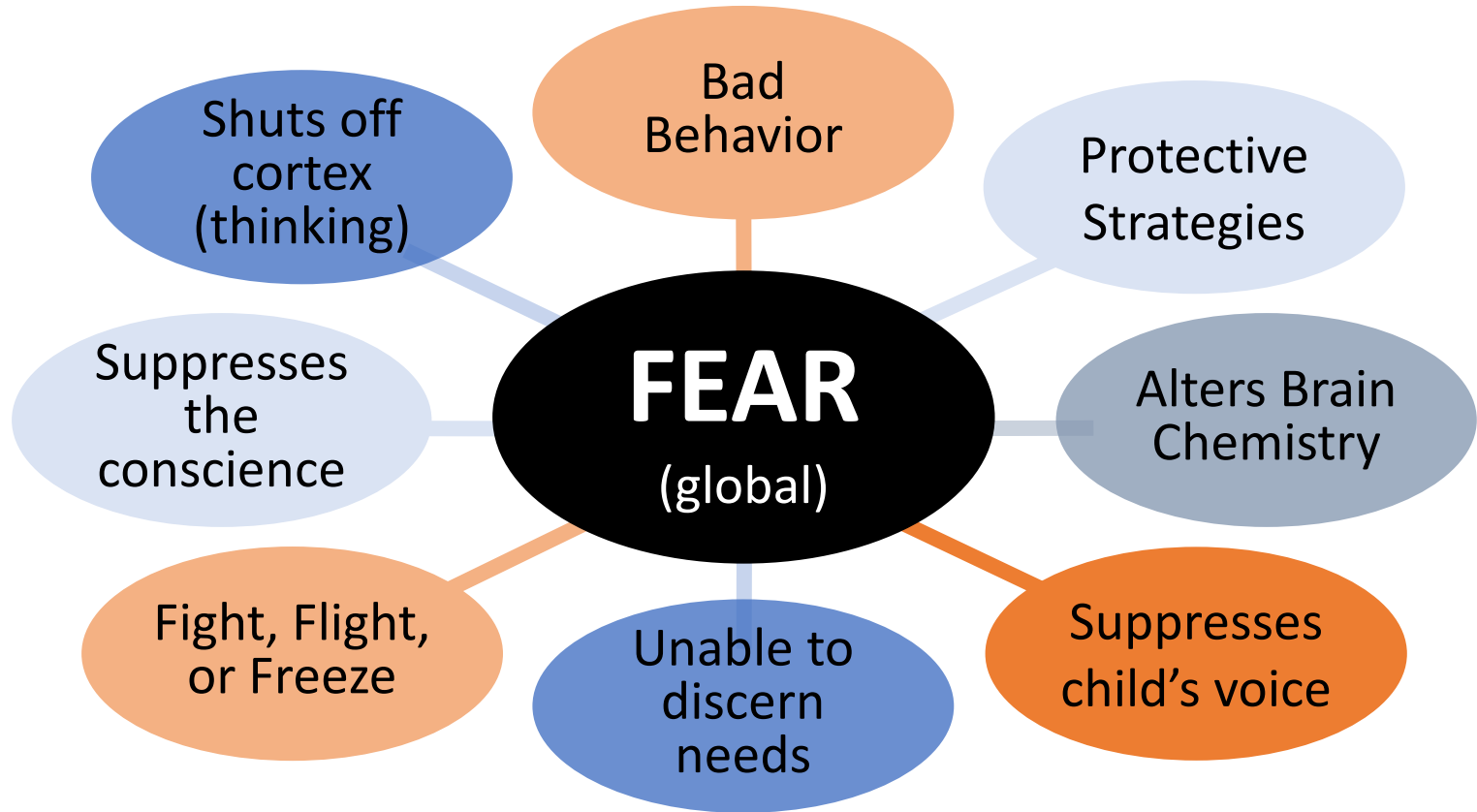
© 1997 Bruce D. Perry, MD., Ph.D., ChildTrauma Academy

Healthy Brain



Abused Brain





KEY PRINCIPLES OF DEVELOPMENT

Attachment - foundation for healthy development

Self-regulation -dependent upon the attachment relationship

Sensory processing - connected to the attachment relationship

PRACTICAL INSIGHTS



EMPOWERING
(Body)



CONNECTING
(Heart)



CORRECTING
(Mind)

TOOLS TO HELP GAIN UNDERSTANDING

Sensory
Checklist

Trauma Loss
Form

Developmental
Checklist

ACE Survey

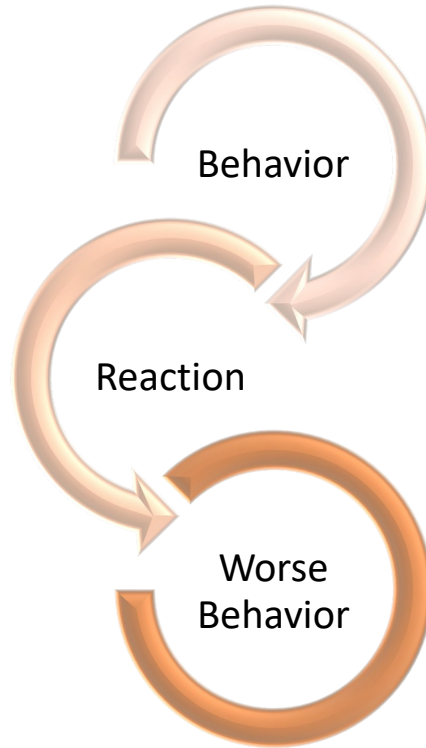
MAXIMIZE A SENSE OF FELT SAFETY

Support Healthy Brain Chemistry

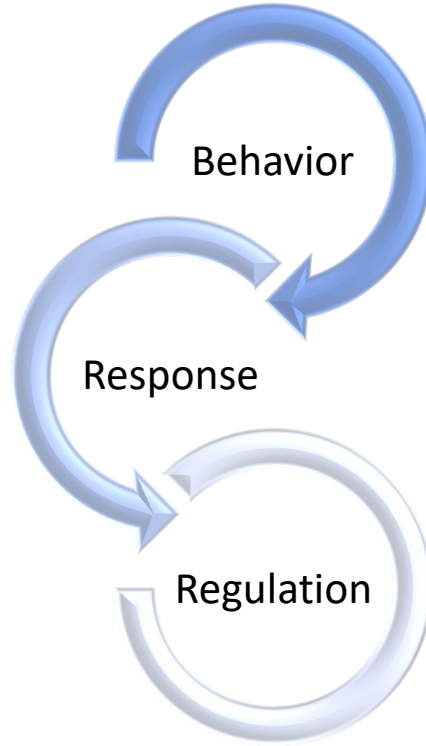
Make the day predictable

Prepare the child for transitions

What happens when we react to a behavior?



What happens when we respond to a need?



Relationship based behavioral interventions

Meaning
Behind
Behavior

Make Time
for Proactive
Teaching

Track
Challenging
Behaviors

Share Power
with Choices
and Re-do's

Full Training	16.5 CE's 9 Modules
---------------	------------------------

On-Line Intro	3 CE's 13 Short Sessions Essential Skills 1-4
---------------	---

And many options in between

Example organizations we have worked with:

- Focus on Youth
- Cincinnati Hills Christian Academy
- Boys and Girls Club of Cincinnati
- Taylor University (and OSU!)

Thank you!

Elinam Dellor

Dellor.1@osu.edu

<https://u.osu.edu/ohiostart/evaluation/dashboard/>

<https://ohiostart.org/>

Bridget Freisthler

Freisthler.19@osu.edu

Julie Cooper

juliecooper@traumafreeworld.org

www.traumafreeworld.org

References

¹ <http://www.pcsao.org/programs/opiate-epidemic>

² <http://www.pcsao.org/pdf/advocacy/2018SystemInCrisisReport.pdf>

³ <http://www.pcsao.org/perch/resources/ohio-start-program-practice-manual-2019.pdf>

Distribution of CTAC Scores: Ages 3-6

Mean Score (total): 4.7

Mean Score (boys): 4.9

Mean Score (girls): 4.6

